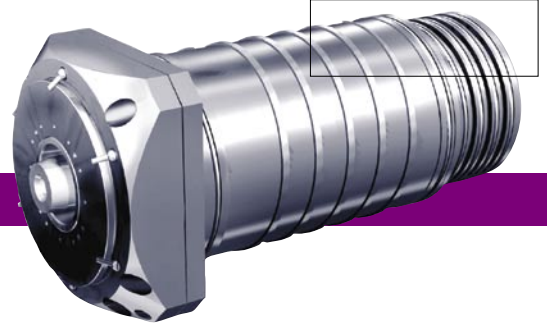


Milling spindle CS-8-135



Drive		
Power:	8 kW (S1)	10,4 kW (S6)
Nominal speed:	2.850 r.p.m.	
Torque max.:	28 Nm (S1)	35 Nm (S6)
Speed max.:	24.000 r.p.m.	
Tool system:	HSK-A63	
Clamping system:	hydromechanical	
Clamping force:	12 kN	
Tool cleaning:	automatic	
Installation position:	vertical, horizontal	
Spindle bearing front:	2 x Ø 65 Hybrid	
Bearing rigidity:	axial 170 N/µm, radial 510 N/µm	
Bearing lubrication:	Grease	
Spindle cooling:	Antifrogen N/Tyfofor	
Power dissipation:	1,2 kW	
Cooling vol. flow appr.:	3,8 l/min	
Tool cooling		
Ext. coolant supply:	6 Spray nozzles	
Int. coolant supply:	optional	
max. pressure:	-	
Air:	optional	
Min. cooling lubrication:	optional	

